

**Application**

Unit substation serving Motor Control Center loads in a paper mill application

**Characteristics**

kVA ..... 15,000 – (2) Paralleled 7,500 KVA  
Voltage ..... Primary: 13800 Delta – Secondary: 4160 Wye/2402  
Phase ..... Three  
HZ ..... 60  
Temp Rise ..... 150 Degrees  
Taps ..... +2, -2 x 2.5%  
Primary BIL ..... 95 kV  
Secondary BIL ..... 30 kV

**Copper Conductor**

Indoor, Category C Enclosure (accessible to authorized personnel only)

Bolted Panel Construction

USST Style Enclosure:

HV Termination: Air Terminal Chamber

LV Termination: Air Terminal Chamber

UL® Listed

AA self-cooled only with digital temperature monitor (CPT not included)

Vacuum Pressure Impregnation

IR Viewing Windows

Secondary 3000:5 C800 CTs wired to a terminal block (multi-ratio)

12kV Station Class Surge Arresters mounted in HV ATC

2400V 100A 10 Sec 24 OHM Neutral Grounding Resistor with 100:5 CT

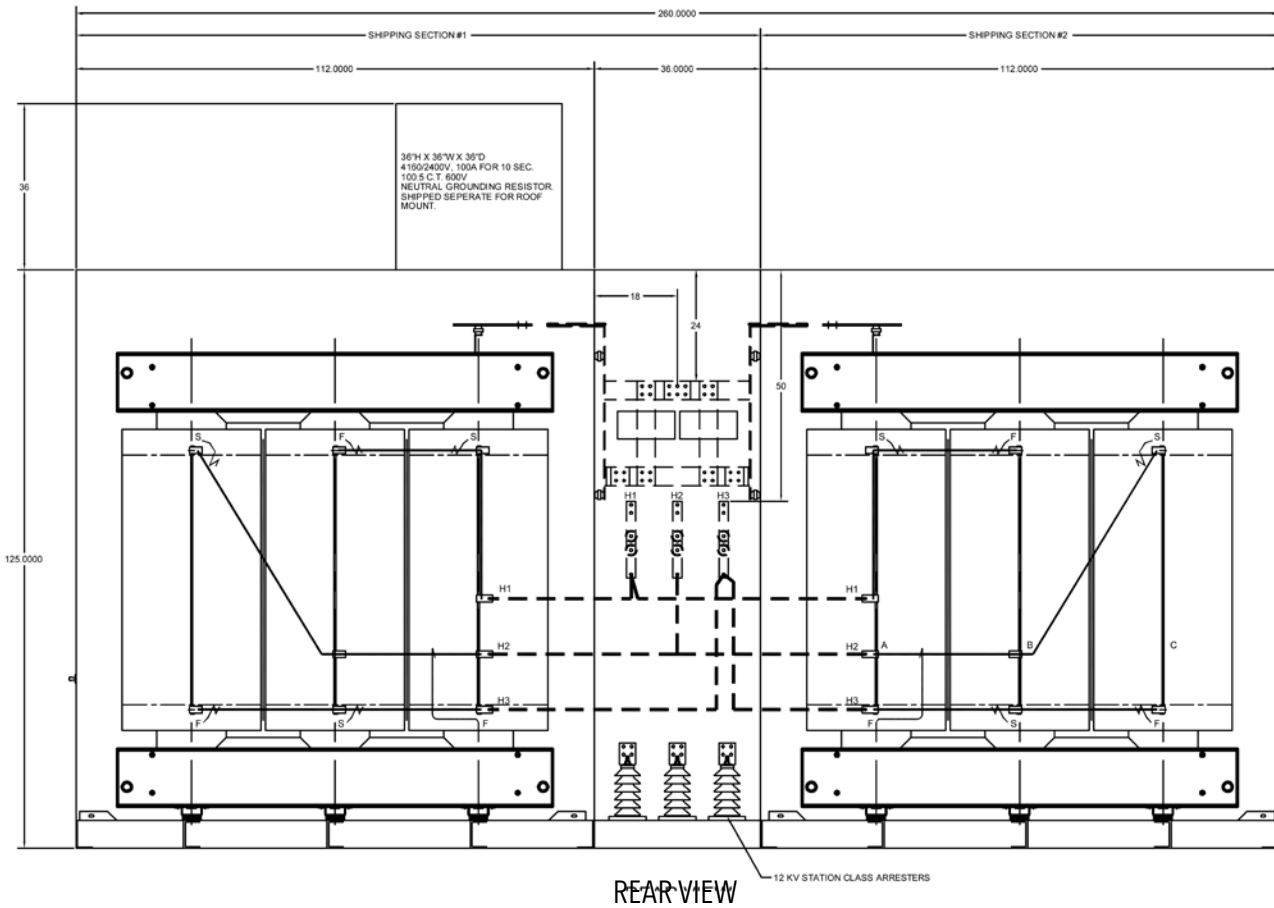
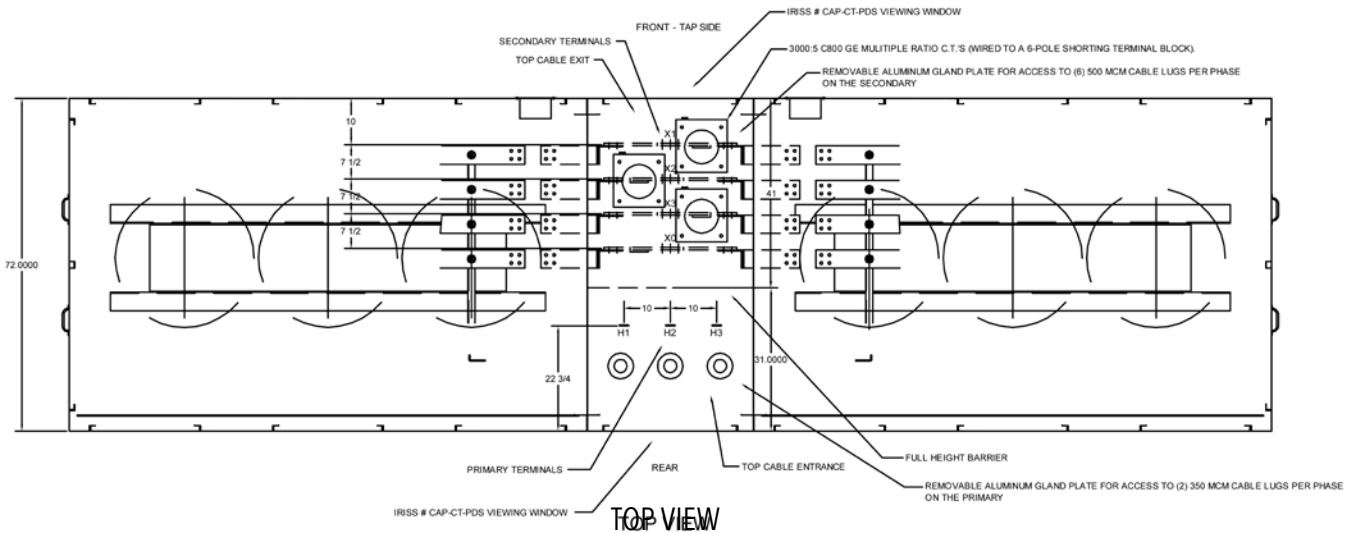
75 db Sound Level

(1) Qualitrol #118ITM-H-4-M Transformer Monitor with MODBUS communication per 7500 kVA Transformer

**Approximate Dimensions:** 260" W x 72" D x 125" H (plus additional 36" for top mounted NGR)

**Approximate Weight:** 58,650 pounds









# 15 MVA Dry-Type Transformer

PRODUCT  
DATA  
SHEET

---